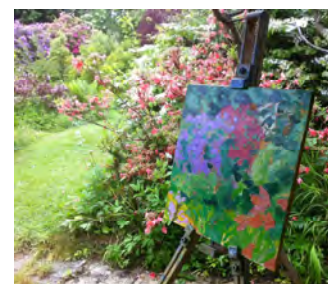




1	2	3
16		Robert Innes
4		10 11
5		12 13
6	7 8	14 15
	9	

- 1 Surf study
  - 2 St Monans skiff
  - 3 Grove still life
  - 4 Banging in the posts
  - 5 Cherry blossom and vines
  - 6 Le taille dans la neige
  - 7 Orange
  - 8 Lemon
  - 9 Garden study
  - 10 The garden
  - 11 Queen's still life
  - 12 Lily in the studio
  - 13 Ginger pots and apples
  - 14 Awash with colour
  - 15 The shed
  - 16 Works in progress
- Prices, dimensions and availability at [www.robert-innes.com](http://www.robert-innes.com)



facebook robbie innes

[www.robert-innes.com](http://www.robert-innes.com)

# Robert Innes Capital Exhibition 2013

Edinburgh and London



Consistently inconsistent!

23 years of restless visual exploration. Following the cycles of rural life in France; buffeted by the wind and rain on the coasts of Scotland; awash with colour in the garden; painting with my children. While contrasting subjects naturally provoke a wide range of painterly responses there is a consistent thread running right through my work which was neatly described in a review of an exhibition in France by *Le Progrès*, 'This love of nature, it is also the love of life, its perpetual movement, and it is this which springs out of all his paintings'

This exhibition is full of surprises, exploring new subjects and familiar themes. Representing myself, I am free to develop my work in every direction that it takes me. It is a privilege and a wonderful way of life, investigating the visual richness of my surroundings and translating it into paint.

With well over a thousand paintings sold and with many collectors owning a dozen or more paintings many would agree.



**Robert Innes**

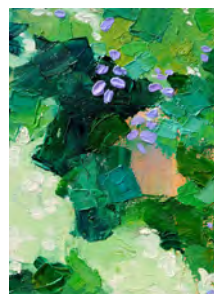
Artist

Le Château de Moiré, for dream holidays.  
Bespoke art tuition.

The Grove  
Poples Well  
Crewkerne  
Somerset  
TA18 7ES



robbie@robert-innes.com  
facebook robbie innes  
Telephone 01460 279 790  
Mobile 07703 311 549



# Robert Innes

Invites you to his 2013 exhibition  
In London and Edinburgh

54 The Gallery  
9-15 September

54 Shepherd Market, London W1J 7QX  
Private View, Tuesday 10 September 6-9pm

The Dundas Street Gallery  
23-29 September  
6 Dundas Street, Edinburgh, EH3 6HZ  
Private View, Tuesday 24 September, 6-9pm

*'I just wanted to tell you that I have been staring at your beautiful paintings ever since I got them home and that my heart is simply swelling.'*

The exhibition is open daily from 10am-7pm, Sunday 10-3pm  
All the paintings may be viewed, reserved or purchased via

[www.robert-innes.com](http://www.robert-innes.com)  
RSVP [robbie@robert-innes.com](mailto:robbie@robert-innes.com)

